

# Our Vision

- We want students to be happy, comfortable in their surroundings and with their peers.
- Working to the best of their ability
- Taking the opportunities for their holistic development.
- Developing and maintaining a habit of being punctual, hard working and presenting good homework



# Things to note

- School begins at 9 each day with meet time
- School finishes at 3.50pm (1.15pm on Fridays)
- Points are awarded to students for good behavior
- Points are deducted for students for poor behavior
- If homework is not completed students are placed on Friday detentions
- We have a confidential anti bullying survey every month

# Subjects

- Students will complete the Junior Cycle
- This comprises of 8 to 10 subjects with state exams and CBA's
- Subject offered are Irish, English, Maths, Business, Geography, Science, History
- Choice between French or Music, Home Economics or Woodwork, Art or Technical Graphics.
- Non exam subjects are PE, SPHE, CSPE and Religion
- Car pooling

# Canteen

- Breakfast is free every morning
- Small break is free (small roll or soup)
- Lunch is €2.20

# Caitriona McKeogh

- Deputy Principal

# Justin McGree

- Supporting your child in the transition to secondary school

- [www.fethardsecondaryschool.ie](http://www.fethardsecondaryschool.ie)
- <https://padlet.com/patrician3/Transitioning>
- <https://docs.google.com/forms/d/1TV-MO2fpj8oBne2XqQSMKiQu2bSqeZmpMSN9yNUc2ok/edit>

# Helena Walsh

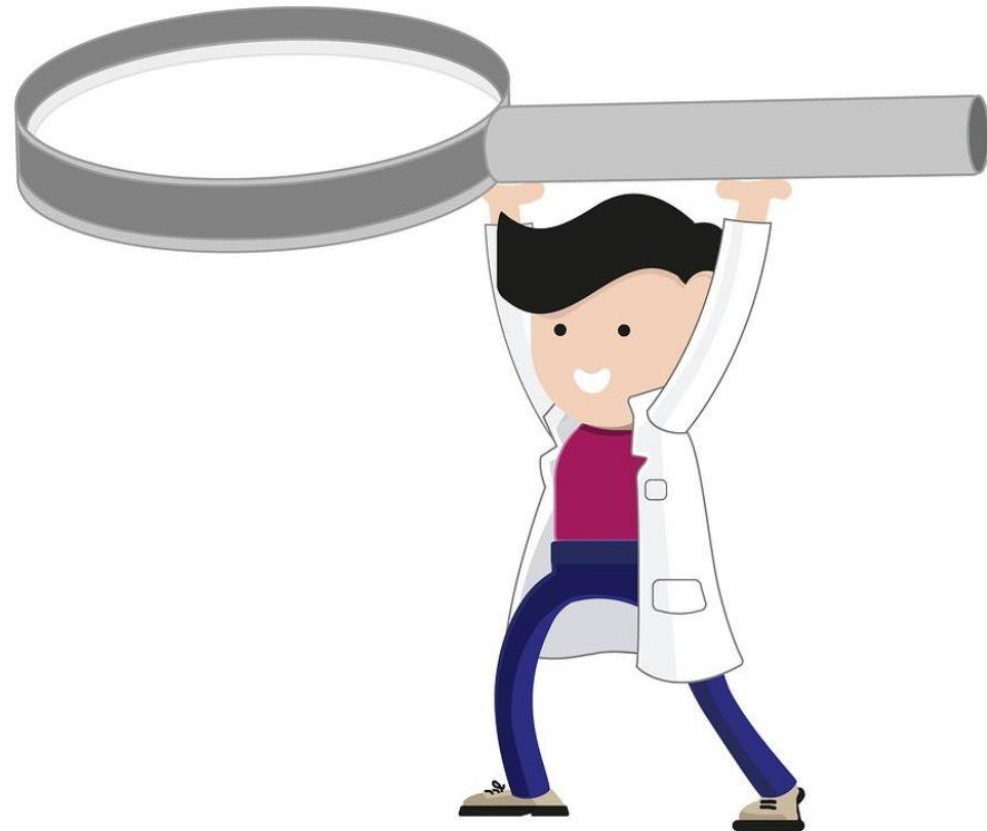
- SEN Coordinator



# Special Ed. Needs

How do we identify who needs help?

Through gathering data - Formal Testing, Teacher Observations, Teacher Referral, Educational & Physiological assessments, Speech and Language reports, Occupational Therapist reports, Parental and Students' concerns etc



# The Continuum of Support



## Support for a **Few**

- Targeted Support Plan
- Withdrawal in small groups, sometimes one to one for Literacy & Numeracy support, Social & Emotional Programmes
- SNA support is possible if there are behavioural issues

## Support for **Some**

- Targeted Support Plan
- Timed intervention weeks/months etc

## Support for **All**

- Team Teaching
- SNA presence in the classroom is possible
- Group Programme.

**Everyone benefits from the above interventions**

# How else do we support our students?

Some students may be eligible for some supports in their state exams. It's called **RACE**. It gives them a better chance of demonstrating their knowledge, rather than being marked down for slowness of reading, bad spelling etc due to a specific learning or physical difficulty.

This stands for **R**easonable **A**ccommodations at **C**ertified **E**xams.

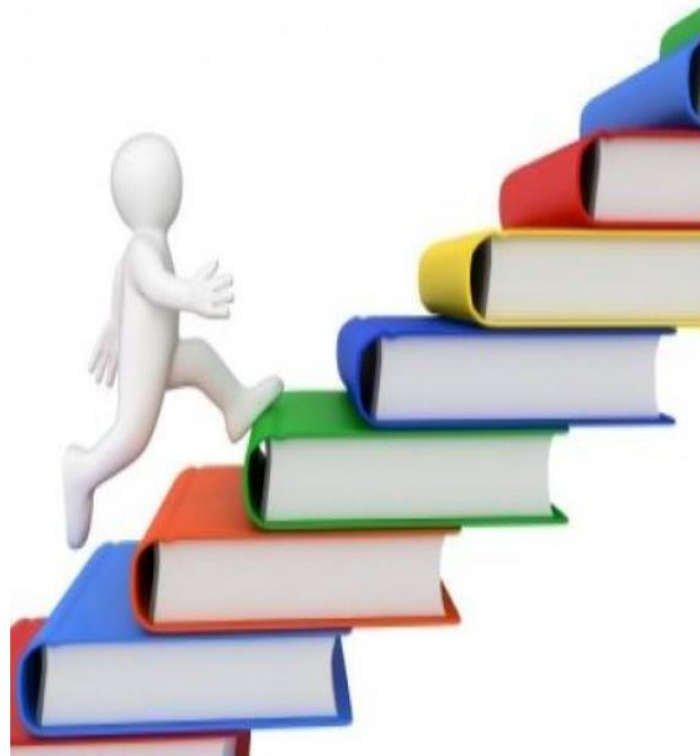
The help can take the form of a **Spelling and Grammar Waiver**, or

A **Reader** who reads either all or parts of the exam papers out to the student, or

A **Recorder** to record them speaking their answers, rather than write them and, in exceptional cases,

A **Scribe** to write down the dictated answer for them

**We establish who qualifies for this help through testing exam students and making applications for accommodations they qualify for, on their behalf.**



# VSware

Download the VSWARE app

Click “Create or reset password”

Set the school to Patrician Presentation Secondary School

Type in your username (sent to you at 5.30pm today)

Make a password (uppercase, lower case, number and symbol)

Write username and password down so you don't forget it.